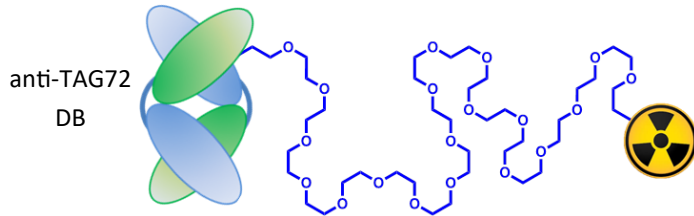




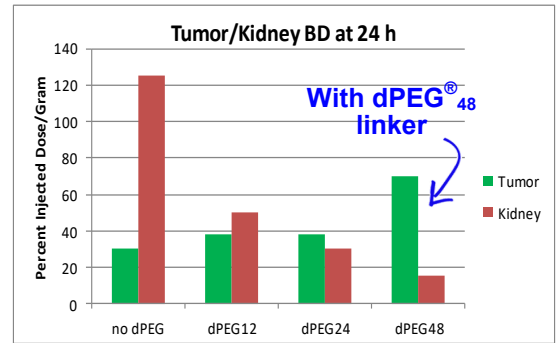
CONJUGATES WITH dPEG® LINKERS: Affinity & Imaging Tags

Tags utilizing SuperHydrophilic™ **dPEG® linkers** can reduce aggregation and non-specific binding, and modulate biodistribution. Biologics can be conjugated with biocompatible affinity and imaging tags for capture, localization, and/or tracking of the biologic.

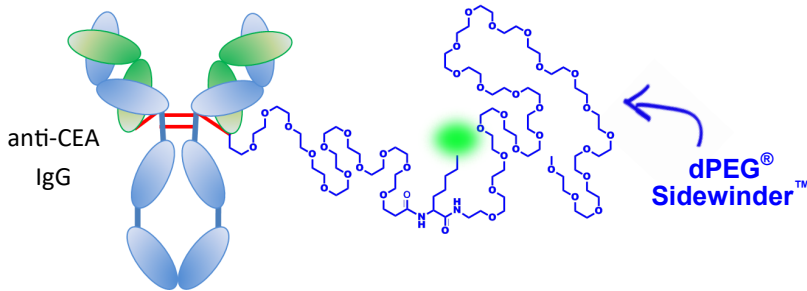
Optimizing tumor / kidney ratios of diabody-DOTA conjugates with dPEG® linkers



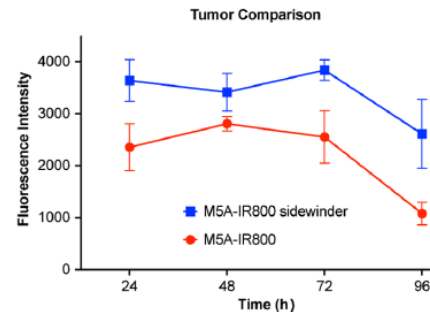
Li, L., et al. (2011) *Bioconj Chem.* 22, 709-716



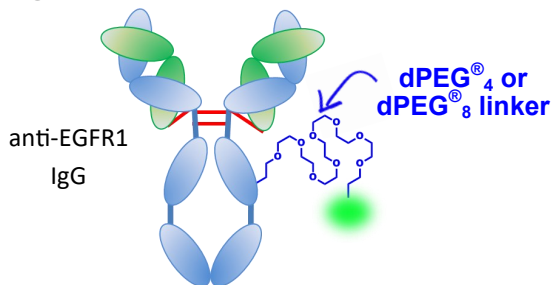
IR800 conjugate with a dPEG® linker has greater tumor uptake & persistence



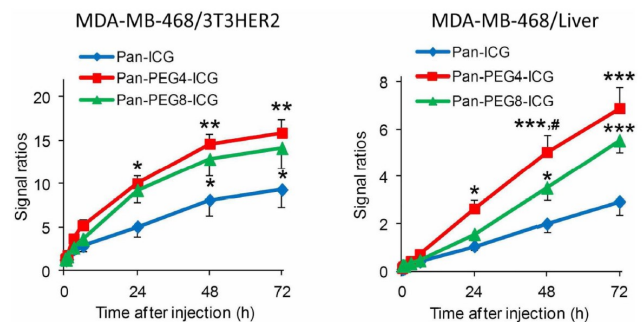
Yazaki, P.J., et al. (2019) *J Biomed Opt.* 24(6), 066012



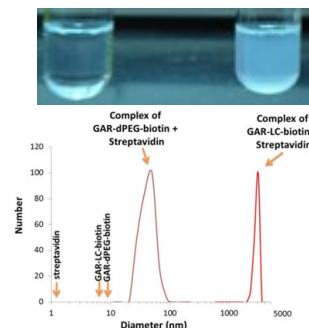
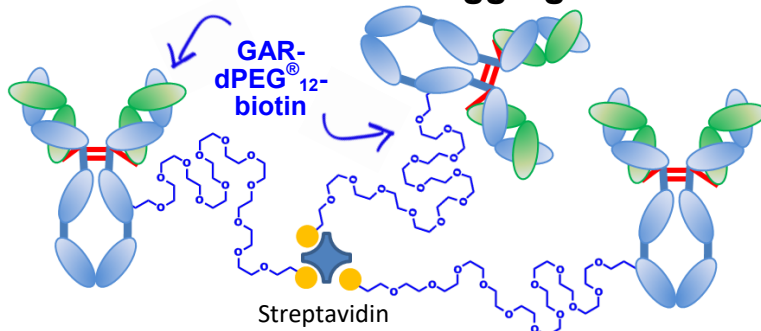
ICG conjugates with dPEG® linkers have higher target/non-target ratios



Sano, K., et al. (2013) *Bioconj Chem.* 24(5), 811-816



dPEG® linkers reduced aggregation of GAR-biotin conjugates



Quanta BioDesign, Ltd.
7470 Montgomery Drive
Plain City, Ohio 43064

Office 614 792.2958
Fax 614 760.9781
Email sales@quantabiodesign.com
QuantaBioDesign.com