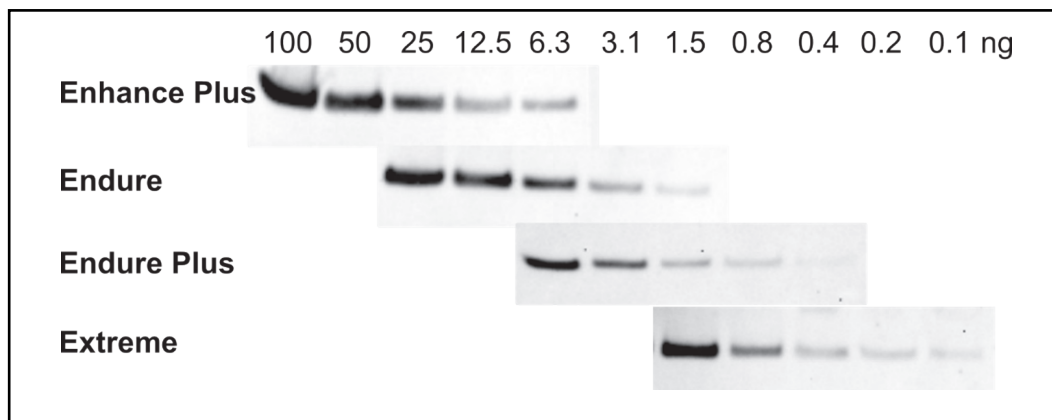


Q-Bright® Chemiluminescent Detection Kits

Q-Bright® chemiluminescent detection is a luminol-based substrate for detection of horseradish peroxidase (HRP) conjugates in western blot applications. Multiple products and sizes allow you to choose the right product for your needs.



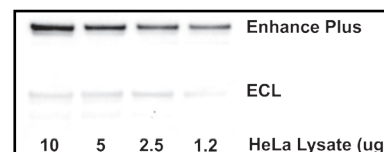
Scan Me



The Q-Bright® line of substrates is designed to provide options for protein detection across a range of sensitivities. Here, we demonstrate the differing sensitivities with identical primary and secondary antibody concentrations and imaging time. The western blotting conditions can be further optimized for maximal signal and signal to noise by adjusting the antibody concentrations and exposure times.

Enhance Plus - the newest product to the Q-Bright® Line

Q-Bright® Enhance Plus is more sensitive than many of the standard, commercial ECL reagents and is useful for routine western blots designed to detect abundant proteins.



Q-Bright® Enhance Plus

- Robust Signal for Routine Western Blotting
- Comparable Sensitivity to SuperSignal™ West Pico

AQ-60012

Q-Bright® Enhance Plus Chemiluminescent Detection Kit

Q-Bright® Endure

- Longest Signal Duration
- Comparable Sensitivity to SuperSignal™ West Dura

AQ-60023

Q-Bright® Endure Chemiluminescent Western Blot Kit

AQ-60013

Q-Bright® Endure Chemiluminescent Detection Kit

Q-Bright® Endure Plus

- High Sensitivity with Minimal Optimization Required
- Unparalleled Performance

AQ-60014

Q-Bright® Endure Plus Chemiluminescent Detection Kit

AQ-60024

Q-Bright® Endure Plus Chemiluminescent Western Blot Kit

AQ-60015

Q-Bright® Extreme Chemiluminescent Detection Kit

AQ-60025

Q-Bright® Extreme Chemiluminescent Western Blot Kit

Q-Bright® Extreme

- Highest Sensitivity
- Comparable Sensitivity to SuperSignal™ West Femto

AQ-60026

Q-Link® Activated HRP Antibody Conjugation Kit

Q-Link® Activated HRP Antibody labeling kit offers an intensely sensitive antibody conjugate. This kit provides all key reagents to create a conjugate with high signal-to-noise ratio, magnified signal with little to no background.

1-ADC22